



Godwin House, SE1



This is one of the best one bedroom apartments currently available in the complex due to its size and beautiful interior. It boasts two terraces and enjoys a view right up to Tower Bridge.

Godwin House is one of the smaller blocks in the One Tower Bridge complex and is right next to Potters Fields and the river.

The facilities provided by One Tower Bridge are vastly superior to anything provided in neighbouring buildings. Residents are looked after by Harrods Concierge and enjoy the use of a well-equipped gym, a spa, virtual golf and a beautiful swimming pool.

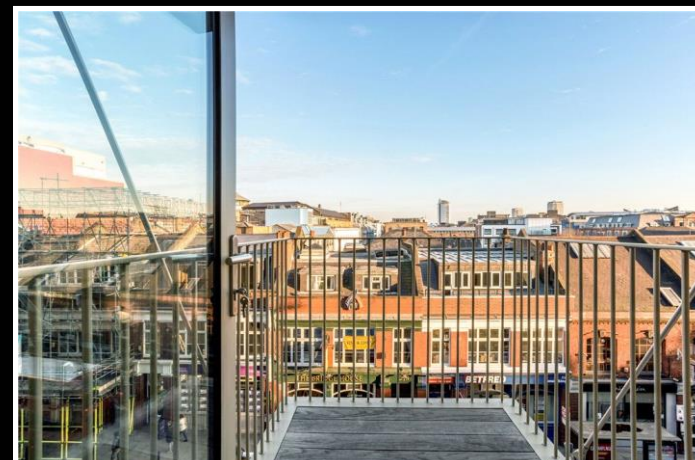
One Tower Bridge will be welcoming The Ivy later this year and there will be little boutiques and other restaurants opening as well whilst the cultural space will be home to London Theatre Company!

Service charge: £tbc

Ground rent: £tbc

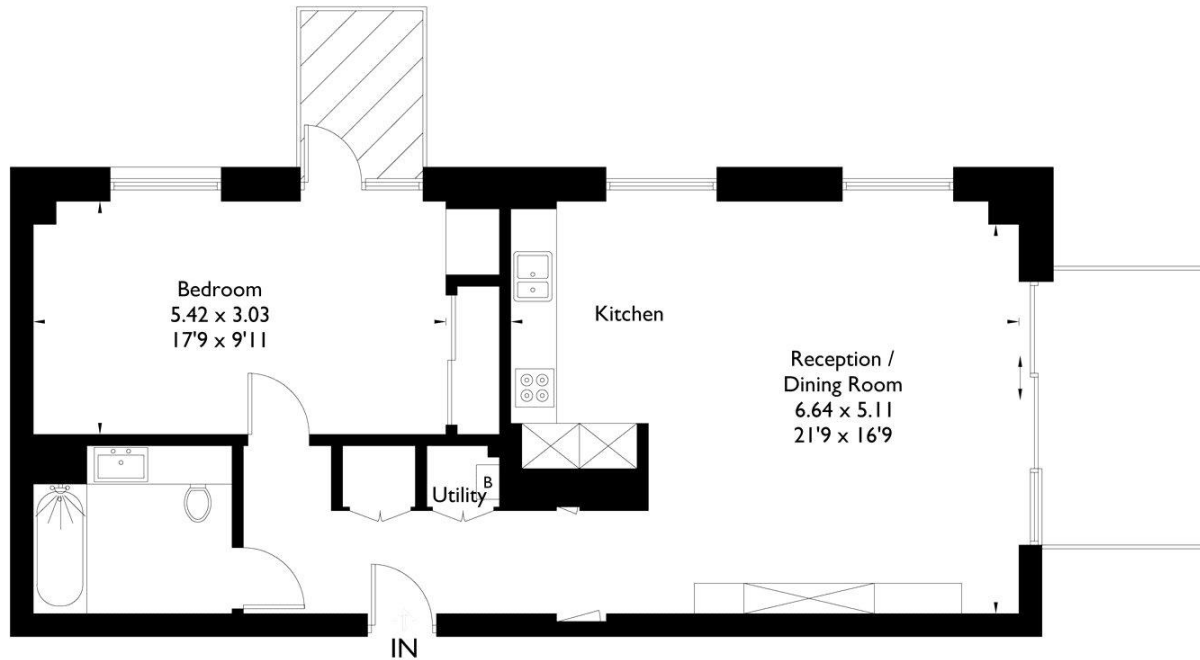
Ref TOW180019

£875,000



Still Walk, SE1

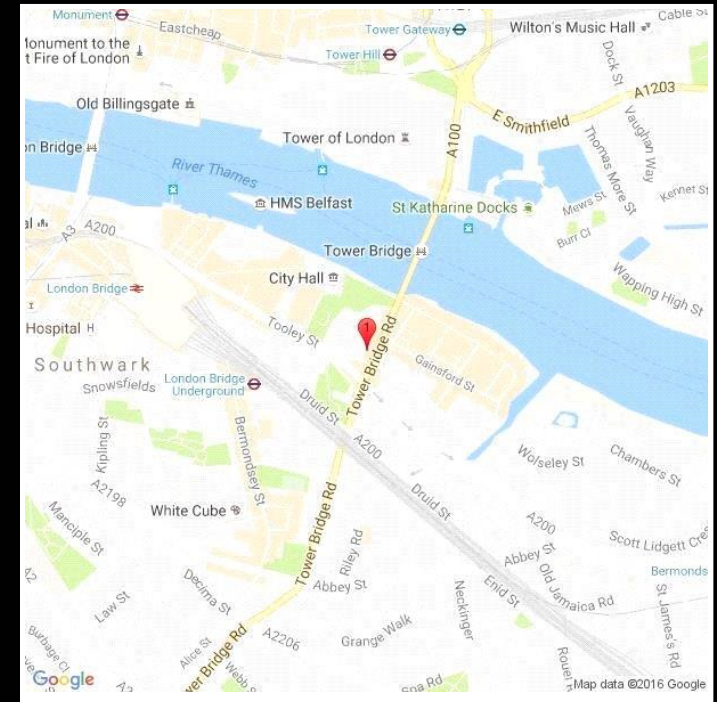
Approximate Gross Internal Area = 71.3 sq m / 767 sq ft



Third Floor

FLOORPLANZ © 2017 0845 6344080 Ref: 179338

This plan is for layout guidance only. Drawn in accordance with RICS guidelines. Not drawn to scale unless stated. Windows & door openings are approximate. Whilst every care is taken in the preparation of this plan, please check all dimensions, shapes & compass bearings before making any decisions reliant upon them.



Energy Efficiency Rating

	Current	Potential
Very energy efficient - lower running costs		
(92+) A		
(81-91) B	87	87
(69-80) C		
(55-68) D		
(39-54) E		
(21-38) F		
(1-20) G		
Not energy efficient - higher running costs		
England, Scotland & Wales	EU Directive 2002/91/EC	

For clarification, we wish to inform prospective purchasers that we have prepared these sales particulars as a general guide. We have not carried out a detailed survey, nor tested the services, appliances and specific fittings. Room sizes are approximate and rounded: they are taken between internal wall surfaces and therefore include cupboards/shelves, etc. Accordingly, they should not be relied upon for carpets and furnishings. Formal notice is also given that all fixtures and fittings, carpeting, curtains/blinds and kitchen equipment, whether fitted or not, are deemed removable by the vendor unless specifically itemised within these particulars.

020 3324 0188

towerbridge@andersonrose.co.uk

www.andersonrose.co.uk

Anderson//Rose